



# Shandong Jinjie Machinery Co.,Ltd

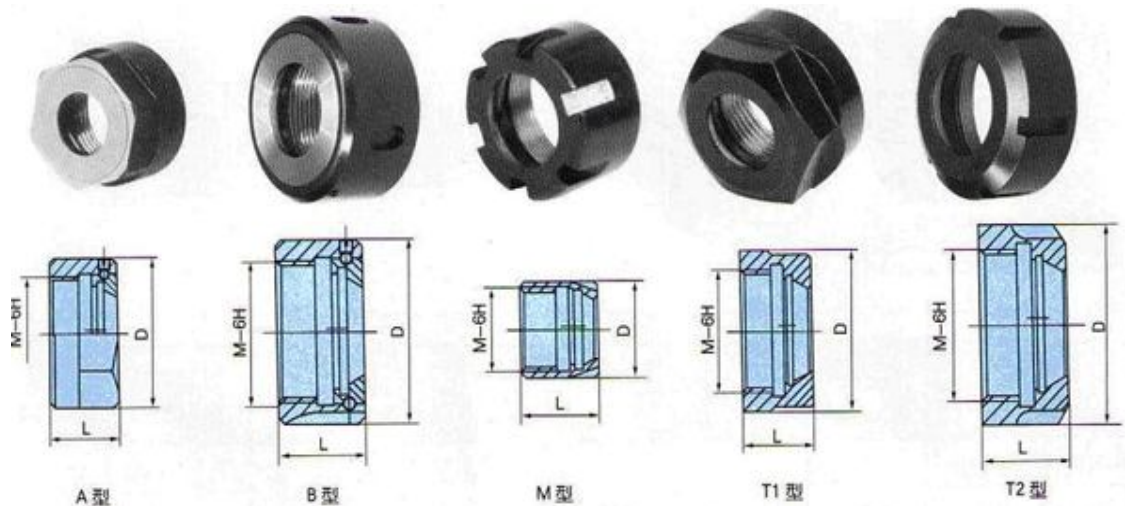
Addr: 253000, #438, North Hubin Road, Tianqu Industrial Park, Dezhou, Shandong, China

Tel: +86-534-2356966 Fax: +86-534-2356966

Email: [sales@jinjie-machinery.com](mailto:sales@jinjie-machinery.com); [sophie@jinjie-machinery.com](mailto:sophie@jinjie-machinery.com)

## Nut Series

### 1. JJ-00072 ER Nut



Type	Model	D(mm)	L(mm)	M	Wt(Kg)
A	ER11-A	19	11.3	M14X0.75	0.005
A	ER16-A	28	17.5	M22X1.5	0.01
A	ER20-A	35	19	M25X1.5	0.05
B	ER25-B	42	20	M32X1.5	0.14
B	ER32-B	50	22.5	M50X1.5	0.3
B	ER40-B	63	25.5	M50X1.5	0.3
B	ER50-B	78	35.5	M64X2	0.5
M	ER8-M	12	12	M10X0.75	0.005
M	ER11-M	16	12	M13X0.75	0.01
M	ER16-M	22	18	M19X1	0.05
M	ER20-M	28	19	M24X1	0.05
M	ER25-M	35	20	M30X1	0.08
T1	ER11-T1	19	11.3	M14X0.75	0.005
T1	ER16-T1	28	17.5	M22X1.5	0.01
T1	ER20-T1	35	19	M25X1.5	0.05
T2	ER25-T2	42	20	M32X1.5	0.14
T2	ER32-T2	50	22.5	M40X1.5	0.2
T2	ER40-T2	63	25.5	M50X1.5	0.3
T2	ER50-T2	78	35.5	M64X2	0.5

<http://www.jinjie-machinery.com/>



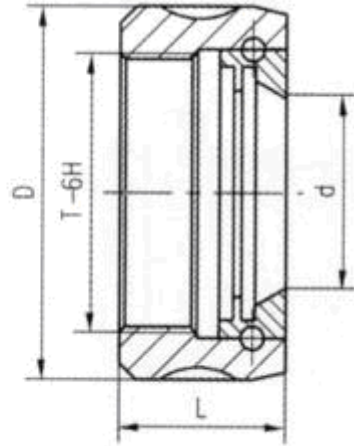
## Shandong Jinjie Machinery Co.,Ltd

Addr: 253000, #438, North Hubin Road, Tianqu Industrial Park, Dezhou, Shandong, China

Tel: +86-534-2356966 Fax: +86-534-2356966

Email: [sales@jinjie-machinery.com](mailto:sales@jinjie-machinery.com); [sophie@jinjie-machinery.com](mailto:sophie@jinjie-machinery.com)

### 2. JJ-00082 EOC Clamping Nut



Model	L (mm)	D (mm)	T
YMEOC6	18	14	M14X1
YMEOC8	26	19	M20X1.5
YMEOC10	30	19	M22X1.5
YMEOC12	35	20	M27X1.5
YMEOC16	43	24	M33X1.5
YMEOC20	50	28	M42X2
YMEOC25	60	30	M48X2
YMEOC32	72	33.5	M60X2.5
YMEOC40	85	37	M68X2.5
YMEOC50	100	43	M80X2.5



# Shandong Jinjie Machinery Co.,Ltd

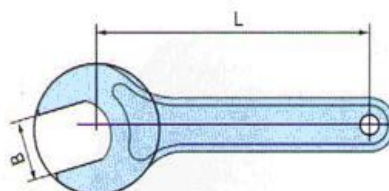
Addr: 253000, #438, North Hubin Road, Tianqu Industrial Park, Dezhou, Shandong, China

Tel: +86-534-2356966 Fax: +86-534-2356966

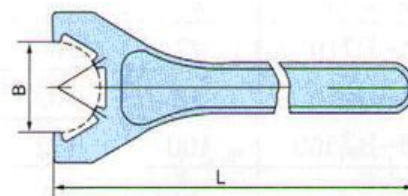
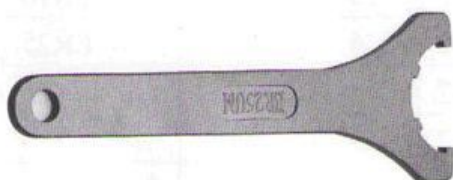
Email: [sales@jinjie-machinery.com](mailto:sales@jinjie-machinery.com); [sophie@jinjie-machinery.com](mailto:sophie@jinjie-machinery.com)

## Spanner Series

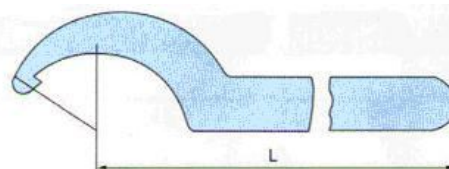
### 1. JJ-00074 ER Spanner



Model	B	L	Clamping Nut
S/ER11	17	110	ER11-A ER11-T1
S/ER16	25	120	ER16-A ER16-T1
S/ER20	30	130	ER20-A ER20-T1



Model	B	L	Clamping Nuts
S/ER25-S	37	210	ER25-B ER25-T2
S/ER32-S	45	250	ER32-B ER32-T2
S/ER40-S	58	290	ER40-B ER40-T2



Model	L	Size	Clamping Nuts
S/ER25	168	38-42	ER25-B ER25-T2

<http://www.jinjie-machinery.com/>



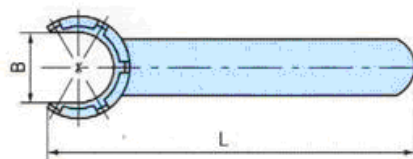
## Shandong Jinjie Machinery Co.,Ltd

Addr: 253000, #438, North Hubin Road, Tianqu Industrial Park, Dezhou, Shandong, China

Tel: +86-534-2356966 Fax: +86-534-2356966

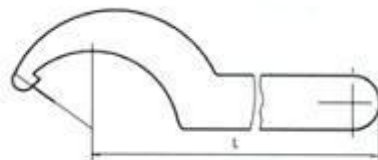
Email: [sales@jinjie-machinery.com](mailto:sales@jinjie-machinery.com); [sophie@jinjie-machinery.com](mailto:sophie@jinjie-machinery.com)

S/ER32	190	250	ER32-B ER32-T2
S/ER40	210	55-63	ER40-B ER40-T2
S/ER50	240	78-85	ER50-B ER50-T2



Model	B	L	Clamping Nuts
S/ER8M	8	70	ER8-M
S/ER11M	11.5	90	ER11-M
S/ER16M	15	110	ER16-M
S/ER20M	19.5	120	ER20-M

## 2. JJ-00084 EOC Spanner



Model	L(mm)	Dia of nuts(mm)
B/EOC6	90	18-21
B/EOC8	125	22-26
B/EOC10	140	28-32
B/EOC12	154	34-36
B/EOC16	168	38-42
B/EOC20	190	45-52
B/EOC25	210	55-62
B/EOC32	230	68-72
B/EOC40	240	78-85
B/EOC50	250	100-110

<http://www.jinjie-machinery.com/>